

DAILY RESEARCH, 29 JULI 2020

PT PROFINDO SEKURITAS INDONESIA

**GD PERMATA KUNINGAN LT 19
JL KUNINGAN MULIA KAV 9C GUNTUR SETIABUDI JAKARTA SELATAN 12980**

TELP +62 21 8378 0888

EMAIL : CUSTOMERSERVICE@PROFINDO.COM

WWW.PROFINDO.COM | PROCLICK.PROFINDO.COM

MARKET MOVERS



Bursa saham AS ditutup melemah setelah terjadi perselisihan di Kongres terkait stimulus baru untuk pemulihan ekonomi dari covid 19. Selain itu investor juga menantikan kebijakan suku bunga The Fed yang diprediksi tetap mempertahankan 0%-0.25%. **DOW +0.43%, S&P +0.74%, NASDAQ +1.67%**

Bursa saham Eropa ditutup variative dimana investor menanti kesepakatan stimulus AS. **Indeks DAX -0.03%, FTSE +0.40%, CAC -0.22%**

Bursa Saham Asia dibuka variative dimana investor menantikan kebijakan suku bunga The Fed dan Stimulus Pemerintah AS untuk pemulihan Ekonomi. **Hang Seng +0.69%, KOSPI +0.26%, Nikkei -0.71%**

Harga minyak mentah dunia melemah seiring dengan alotnya perundingan kebijakan stimulus AS untuk pemulihan ekonomi. Harga emas ditutup menguat menjelang pertemuan The Fed dan ditengah ketidakpastian Stimulus AS. **WTI -0.15%, Brent Oil -0.18%, Gold +0.47%.**

IHSG pada perdagangan hari ini diperkirakan akan **BULLISH** dengan Range pergerakan **5097-5143** dengan saham-saham yang dapat diperhatikan : **SMBR AGRO NIKL GJTL MAPI ICBP**

MARET DATA

AMERIKA

DOW 30	26,379.28	-205.49	-0.77%
S&P 500	3,218.44	-20.97	-0.65%
NASDAQ	10,402.09	-134.18	-1.27%

EUROPE

DAX	12,835.28	-3.38	-0.03%
FTSE 100	6,129.26	+24.38	+0.40%
CAC 40	4,928.94	-10.68	-0.22%

ASIA

SHANGHAI	3,227.64	-0.32	-0.01%
HANGSENG	24,772.76	+169.50	+0.69%
SET	1,340.92	0.00	0.00%
KOSPI	2,262.89	+5.90	+0.26%
JCI	5,112.99	-3.68	-0.07%
NIKKEI	22,495.50	-161.88	-0.71%
ASX	6,038.90	+18.40	+0.31%

COMMODITIES

GOLD	1,953.70	+9.10	+0.47%
WTI OIL	40.98	-0.06	-0.15%
BRENT OIL	43.59	-0.08	-0.18%
COAL	53.50	-0.30	-0.56%
PALM OIL	2688	-102	-3.66%
TINS	17,975.00	-32.50	-0.18%
NICKEL	13,657.50	-37.50	-0.27%

EVENT & ECONOMIC CALENDER

ECONOMIC CALENDER :

INDONESIA

270720 MOTORBIKE SALES YoY (JUN)
LOAN GROWTH YoY (JUN)

GLOBAL

270720 HONG KONG TRADE BALANCE (JUN)
CHINA INDUSTRIAL PROFIT YoY (JUN)
JAPAN ALL INDUSTRY ACTIVITY INDEX MoM (MAY)

290720 US API CRUDE OIL STOCK CHANGE
KOREA CONSUMER CONFIDENCE (JUL)
AUSTRALIA INFLATION RATE YoY (Q2)
GERMANY IMPORT PRICE MoM (JUN)
FRANCE CONSUMER CONFIDENCE (JUL)
HONG KONG GDP RATE YoY (Q2)

300720 FED INTEREST RATE DECISION
JAPAN RETAIL SALES YoY (JUN)
FRANCE PPI MoM (JUN)
GERMANY GROWTH GDP RATE YoY (Q2)
HONG KONG RETAIL SALES YoY (JUN)
EUROPE CONSUMER CONFIDENCE FINAL (JUL)
GERMANY INFLATION RATE YoY (JUL)
US GDP GROWTH EATE QoQ (Q2)
US JOBLESS CLAIMS

310720 KOREA RETAIL SALES YoY (JUN)
JAPAN INDUSTRIAL PRODUCTION YoY (JUN)
CHINA NBS PMI MANUFACTURING (JUL)
FRANCE GDP GROWTH RATE QoQ (Q2)
GERMANY RETAIL SALES MoM (JUN)
FRANCE INFLATON RATE YoY (JUL)
EUROPE GDP GROWTH RATE QoQ (Q2)
EUROPE INFLATION RATE YoY (Q2)

CORPORATE ACTION :

DEVIDEN

270720 GHON RP 20 (CUM 2707, PAYMENT 1908)
280720 AMAG RP 30 (CUM 2807, PAYMENT 0608)
290720 FISH RP 75 (CUM 2907, PAYMENT 1908)
300720 SHIP RP 16 (CUM 3007, PAYMENT 1908)

RUPS

270720 WIIM PNBS PLAS PGLI MGRO MASA MAGP IATA BCAP
280720 WEGE TRUK SRSN MSKY IPTV INTP DOID
290720 ZONE UNIC UCID TAMU MERK MDKA KRAS KEEN KAEF INCO INAF FORU
CTBN CSRA ATIC
300720 YELO TPMA SLIS PALM IFII DYAN CTRA CLEO CITA BBYB BBKA ASRM

IPO

RIGTH ISSUE

JAKARTA COMPOSITE INDEX



PREVIOUS 28 JULI 2020

CLOSING	5112.989	-0.072%
TRANSACTION	IDR 8.34 TRILLION	
FOREIGN NETT	IDR 300 BIO (SELL)	

PREDICTION 29 JULI 2020

BULLISH
RANGE 5097-5143

DOJI
STOCHASTIC : NETRAL
MACD : HISTOGRAM NEGATIF DAN NETRAL

TECHNICAL RECOMENDATION



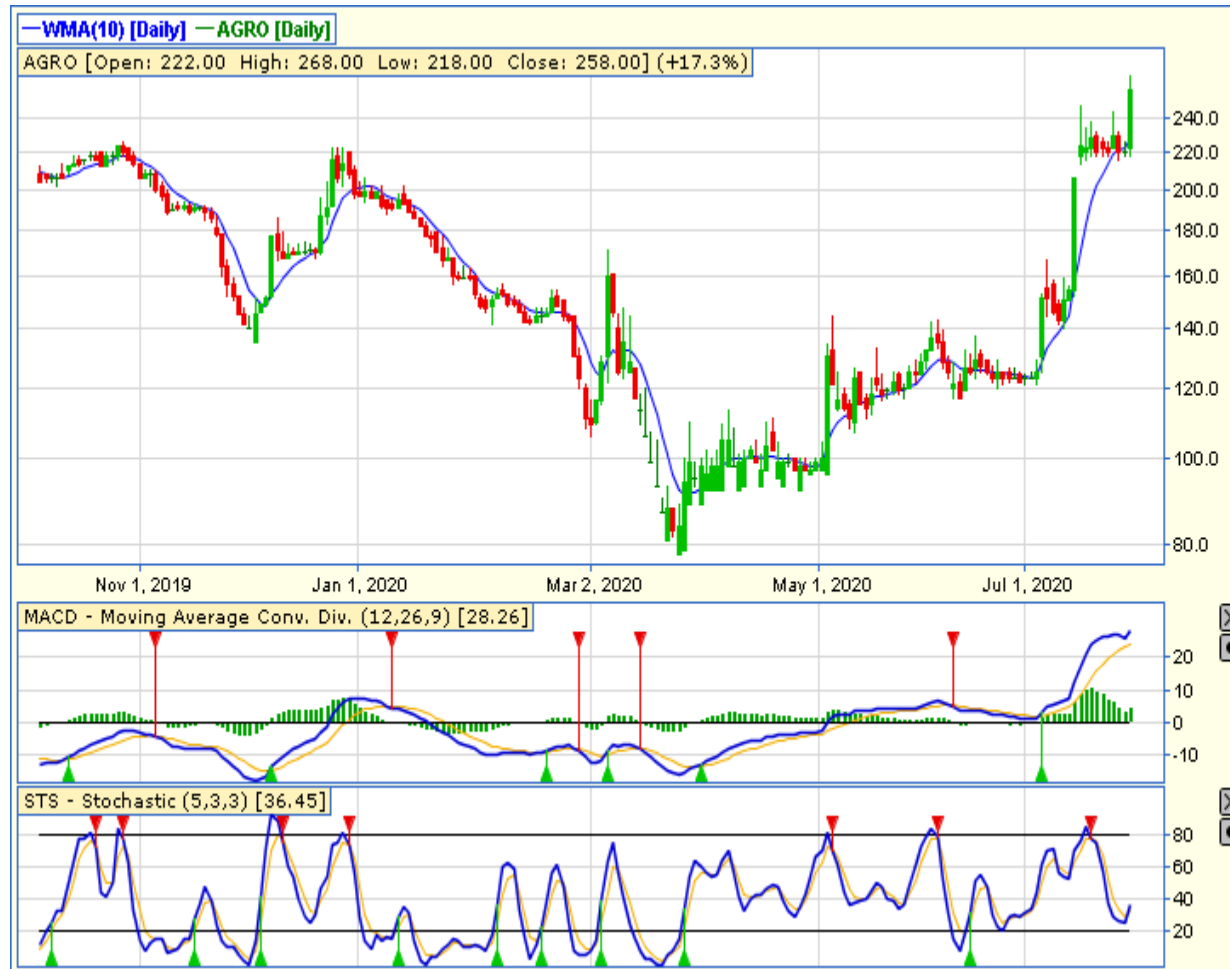
SMBR – PT SEMEN BATURAJA TBK

CLOSING 28/7/2020 RP 545 (+19.5%)

**SELL ON STRENGTH
TAKE PROFIT 630**

**LONG WHITE CANDLE
STOCHASTIC : DOWNTREND
MACD : HISTOGRAM POSITIF DAN UPTREND**

TECHNICAL RECOMENDATION



AGRO – PT BRI AGRONIAGA TBK

CLOSING 28/7/2020 RP 258 (+17.3%)

BUY

TARGET PRICE 320

STOPLOSS < 244

BREAK OUT CUP & HANDLE

STOCHASTIC : GOLDEN CROSS

MACD : HISTOGRAM POSITIF DAN UPTREND

TECHNICAL RECOMENDATION



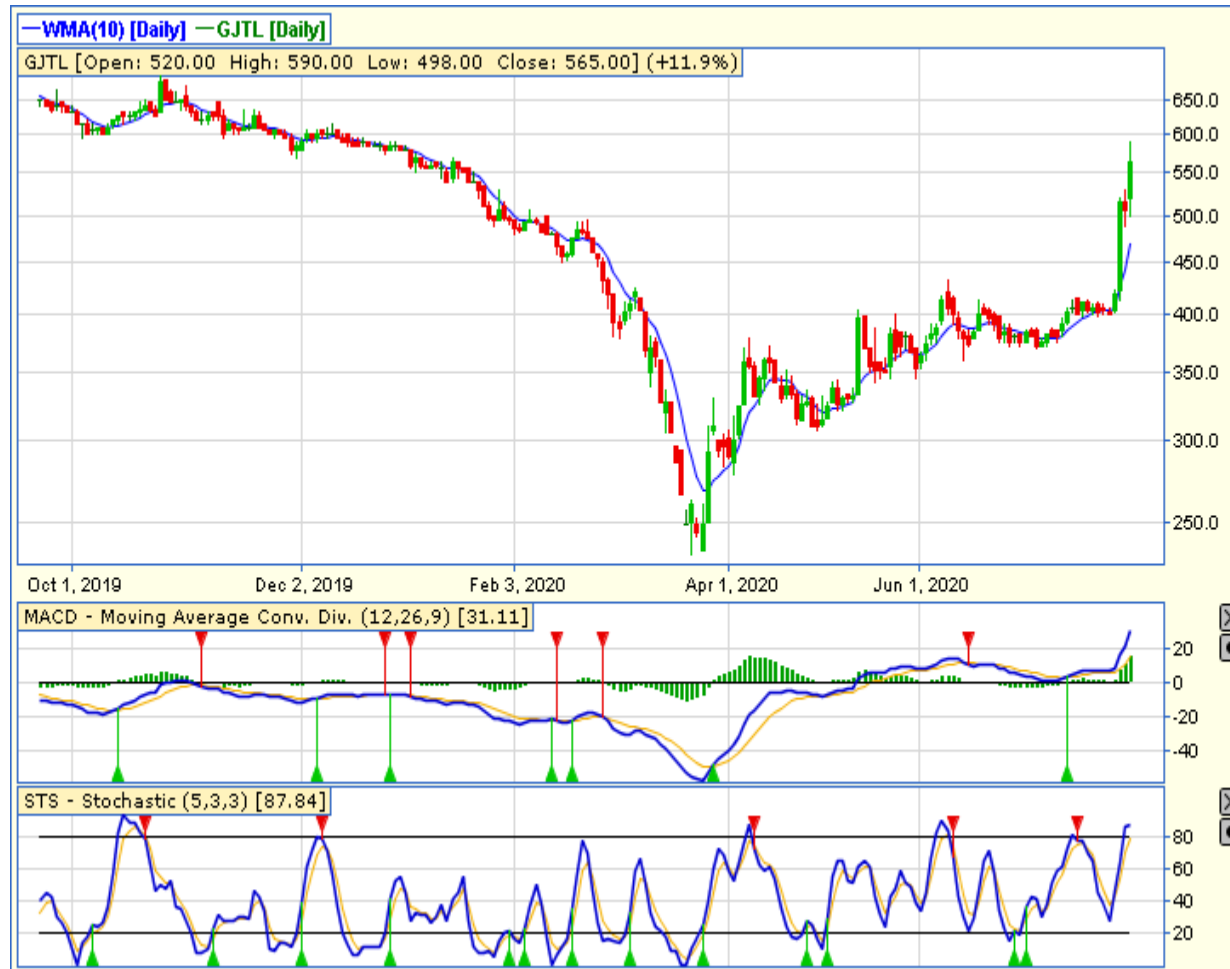
NIKL – PT PELAT TIMAH NUSANTARA TBK

CLOSING 28/7/2020 RP 925 (+14.9%)

**SELL ON STRENGTH
TAKE PROFIT 1130**

**BULLISH ENGULFING
STOCHASTIC : DOWNTREND
MACD : HISTOGRAM POSITIF DAN UPTREND**

TECHNICAL RECOMENDATION



GJTL – PT GAJAH TUNGGAL TBK

CLOSING 28/7/2020 Rp 565 (+11.9%)

**SELL ON STRENGTH
TAKE PROFIT 650**

BREAK OUT RISING WEDGE
STOCHASTIC : UPTREND
MACD : HISTOGRAM POSITIF DAN UPTREND

TECHNICAL RECOMENDATION



MAPI – PT MITRA ADIPERKASA TBK

CLOSING 28/7/2020 RP 700 (+1.4%)

**SELL ON STRENGTH
TAKE PROFIT 730**

**MORNING DOJI STAR
STOCHASTIC : OVERSOLD
MACD : HISTOGRAM NEGATIF MENGECEIL DAN
BERSIAP GOLDEN CROSS**

TECHNICAL RECOMENDATION



ICBP – PT INDOFOOD CBP SUKSES MAKMUR TBK

CLOSING 28/7/2020 RP 9050 (+0.6%)

BUY

TARGET PRICE 9475

STOPLOSS < 9000

INSIDE BAR

STOCHASTIC : OVERSOLD

MACD : HISTOGRAM NEGATIF MENGECIL DAN LOWER AREA

RESEARCH TEAM



YULIANA

**RESEARCH ANALYST &
CORPORATE FINANCE**



DIMAS WP PRATAMA, CSA

TECHNICAL ANALYST

EQUITY CAPITAL MARKET TEAM



JESSIE JAMES

HEAD OF EQUITY SALES



PRASETYO NUGROHO

HEAD OF DEALING ROOM



GABRIELLA PRATIWY

HEAD OF ONLINE TRADING